



TECHNICAL DATA SHEET



Valid from: June 24, 2021

MANUFACTURER

ATENA PROPERTY MANAGEMENT SP. Z O. O.

ul. Łódzka 42 95-050, Konstantinów Łódzki

biuro@atenapm.pl

www.atenapm.pl www.nanoizolacje.eu



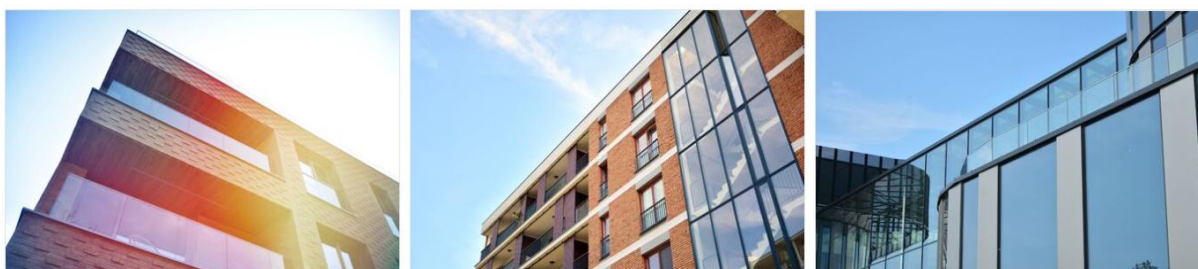
THERMIX APM FOIL®

PAINT / SPRAY ON LIQUID PROTECTIVE FOIL

PRODUCT DESCRIPTION:

The THERMIX **APM FOIL® liquid protective film** is a gel-like liquid that forms a dense polymer film when dry. Easily removable / peelable coating, used to temporarily protect surfaces against minor damage, scratches and dirt. When applied, you can protect almost any surface during construction or renovation. It protects against dust, paint, cement and mechanical damage caused by welding spatter of metal filings and scratches. It is a liquid foil, which allows you to simplify and speed up any construction work, and most importantly, reduce the cost of the preparatory process of construction and finishing works.

APM FOIL® - the liquid foil can be applied with a roller, a brush or a spray gun. It is water-based, non-toxic and, above all, 100% biodegradable. It protects the surface from up to 12 months or even up to 24 months (depending on the place of application and conditions). It adheres well to surfaces in the form of a strong transparent or opaque film (depending on the type of application and colour). It is easily removable without leaving any traces on the surface. It leaves a perfectly clean surface, does not require washing (savings on cleaning after renovation and construction works). **APM FOIL®** is a water-based emulsion coating that can be applied to coloured or unpainted vertical or horizontal surfaces for temporary protection.



APM FOIL® - a temporary peelable protective coating designed to protect non-porous surfaces against damage caused by abrasion, stains, leaks, moisture, scratches and corrosion. The liquid coating dries to form a strong and flexible film that will protect the surfaces. **INTERNAL APPLICATION.** Use outdoors only in summer and avoid heavy rainfall. Do not apply at temperatures lower than 10 ° C and humidity levels higher than 85%



+48 42 203 12 23



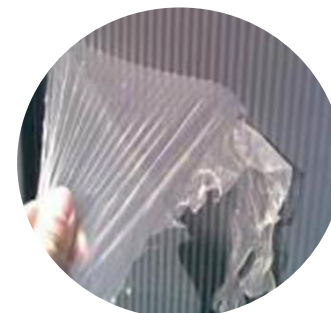
biuro@atenapm.pl



ul. Łódzka 42
95-050 Konstantinów Łódzki, Polska

ADVANTAGES OF APM FOIL® LIQUID FILM:

- ✓ Easy to apply;
- ✓ The foil has cleaning properties, which means that after its removal, the protected surface does not require washing or cleaning;
- ✓ When applied to dirty (dusty) surfaces, the foil “absorbs” everything under it, and after its removal, the surfaces become perfectly clean;
- ✓ Protects surfaces against scratches, dirt and is durable;
- ✓ Reduces the costs of construction works by reducing the costs of post-construction cleaning and surface cleaning;
- ✓ Reduces the risk of losses and costly repairs;
- ✓ Speed of application compared to standard foils (no tedious tapes and foils);
- ✓ Improves the company's image (no complaints);
- ✓ Safe to use (the product does not react with glass and seals);
- ✓ Water-based product, safe for the environment, eco-friendly and 100% biodegradable;
- ✓ Fast-setting and efficient to use;
- ✓ Chemical resistant - resistance to solvents and petroleum products;
- ✓ Resistant to abrasion, scratching and UV radiation;
- ✓ Protects against sawdust, water, moisture and corrosion;
- ✓ Can be applied to horizontal and vertical surfaces;
- ✓ Non-flammable;
- ✓ After application, tools can be cleaned with water, which makes cleaning easy and cheap;
- ✓ Easy peelable protective coating;
- ✓ Transparent.



APPLICATION: glass facades, facade panels, windows, shop windows, doors, elevators, walls, handrails, furniture, bathroom and kitchen fittings, machine elements, polished concrete, tiles and terracotta, new cars, buses, protection of machine parts during storage or transit, cranes, protection of coated metals during production or maintenance, pipes during transit or storage, protection of spraying booths. Refurbishment of apartments: painting and plastering works, finishing works, tiling. Temporary protection of ceramic and marble surfaces. Protection of surfaces against damage, construction and repair of yachts, protection of decorations, advert banners and boards during fairs, transportation packaging, advertising in transit. Protection against dirt, dust, oil, grease, rust, corrosion.



TECHNICAL DATA SHEET



Valid from: June 24, 2021

CAN BE APPLIED ON: plastics, acrylic, PVC, ceramics, parquets, panels, marble, granite, work surfaces, stainless steel, aluminium, polished concrete, lacquered floors, tiles, laminated surfaces, glass and most non-porous surfaces.

DRYING TIME: At a value of approx. 150 microns the film coating will be fully dry in approximately 60 minutes at room temperature. Forced drying and increasing the surface temperature to a maximum of 40 ° C can be used. Full curing depends on the ambient temperature, humidity, ventilation and the thickness of the applied layer and takes from 0.5 to up to 24 hours.

TYPE OF MATERIAL: water-based, non-toxic, non-flammable.

COLOUR: colourless / transparent in wet and dry form. Also available in various colours on request. Non-standard base colours are subject to price negotiation.

HEALTH AND SAFETY: the compound is non-toxic and non-flammable when wet. Dry coating waste can be disposed of as minor hazard. Please see the separate safety data sheet.

STORAGE: Shelf life: 12 months. After the durability period, it is subject to re-inspection. Should be protected against frost throughout the entire storage period. Should be stored between 5 ° C and 25 ° C. and protected from sunlight. Containers should be tightly closed. Opened or partially filled containers may show an increase in viscosity and / or formation of a scum. If it happens, the product must be filtered before use. It is recommended to cover the remaining amount in the bucket to protect it against air. Do not allow the fluid to freeze!

COATING LAYER: The theoretical coverage is approximately 8-10 m² per kg at a WFT of 150 microns. (*WFT - wet paint film thickness before drying*)

REPAIRING THE COATING: if the protective coating breaks, it can be repaired by lifting the broken patch, applying a fresh layer to the bottom and resealing. Alternatively, by cutting off the damaged area and applying a fresh layer.

SPECIFICATION:

The physical state	Liquid
Colour	Clear, colourless
Smell	Characteristic
Boiling point, initial boiling point and boiling range	approx. 100°C.
Flash point	Not applicable
Decomposition temperature	Not applicable
pH	5-7
Viscosity	20000-30000 mPa * s (dynamic, Brookfield RVF 6/20 23 ° C)
Density or relative density	1.09 g /cm ³

REMOVAL: The dry layer can be easily removed by hand or with a pressure hose. Do not remove under freezing conditions as the coating may be brittle. Resistant to weather conditions.

CLEANING: Clean rollers, spraying guns and other equipment with water immediately after use.

PACKAGING: Plastic buckets with a capacity of 20 L



+48 42 203 12 23



biuro@atenapm.pl



ul. Łódzka 42
95-050 Konstantynów Łódzki, Polska

APPLICATION INFORMATION AND RECOMMENDATIONS: for detailed instructions, see application instructions and use a wet film gauge to ensure minimum and maximum wet film thickness is achieved. The contents of the container should be thoroughly mixed before use. Always conduct a test area and peel off a trial surface of each substrate prior to use. The minimum wet film thickness (WFT) is 150 microns [50 microns dry film thickness (DFT)], the maximum is 300 microns [wet film]. Do not apply in wet or frosty conditions and protect against rainfall until it is completely dry and avoid applications when rainfall is predicted within the next 24h. The temperature of the material during application should be 20-30 ° C.

WFT - wet coating thickness (before drying) DFT - final dry coating thickness

ROLLER APPLICATION

- Using a sheep wool roller - apply 2 coats, letting the first one dry completely. Apply liberally to obtain a minimum WFT of 150 microns (WFT) (50 microns DFT);
- In case of roller application, up to 10% water of the total weight of the material can be added; two layers can be applied after each layer is completely dry;
- The temperature of the material during application should be 20-30 ° C;
- Do not apply at temperatures lower than 10 ° C and humidity levels higher than 85%
- The roller should be dry and with long hair, preferably sheep wool;
- The surface should be clean, degreased and free of contamination;
- One layer should be applied at a time and the second one can be applied after the first one has dried completely;
- At the end of the work, clean the roller with water and let the clean tools dry.



SPRAY APPLICATION

- Before application: tools for spray painting should be thoroughly rinsed with clean water. They must be completely clean of solvents or thinners;
- The surface should be clean from dirt, primed, degreased;
- In case of application on windows, doors, gates, cover the key locks with adhesive tape so as not to paint over these elements;
- Apply with a spray gun to obtain a minimum WFT of 150 microns (50 microns DFT). Apply with airless spray gun using size 517 / 0.017" nozzle;
- When applying with an air spray gun, the mass should be diluted with water in the proportion of 30% - 40% of the total mass of the material, and applied in two layers with an interval of 2-3 hours. Airless Spraying - Dilute material with 10-15% of the total weight of the material with water.
- The application should be made in two layers, one vertical and the other horizontal. When spraying, there is no need to wait for the first layer to dry. The film applied by spraying will be more homogeneous.



AVERAGE USAGE: 8-10 m2 / LITRE

PERSONAL PROTECTION / HEALTH & SAFETY

During application it is recommended to use a protective mask, protective gloves (prevention of an allergic reaction), protective goggles (in particular when applying with a pressure gun), painting overalls in order to avoid stains on shoes and clothes.



TECHNICAL DATA SHEET



Valid from: June 24, 2021

PRECAUTIONS:

Observe the recommendations given in the safety data sheet. This data sheet does not contain information on the safety of the product. Before usage, read the safety data sheet and the labels on the packaging in order to obtain information about the safe use and health and physical hazards. Do not dispose of by incineration. Keep out of the reach of children. Notes for the client: The above information is accurate and to the best of our knowledge, based on reliable research and practical experience. The specified properties are provided for guidance only and do not constitute guaranteed product properties. The customer should test the product for specific applications to be sure that it has the expected properties and provides the required operational performance.

Additional information is available at: +48 42 203 12 23 e-mail: biuro@atenapm.pl



+48 42 203 12 23



biuro@atenapm.pl



ul. Łódzka 42
95-050 Konstantynów Łódzki, Polska